

# CD/FQ Box

Storage for CDs or fat quarters

SIZE 6×4¾×11"

## Materials & Cutting

½ yard exterior fabric:

1 Bottom: 12×7"

2 Sides: 12×5¼"

2 Ends: 7×5¼"

½ yard lining/strap fabric:

1 Lining: 20½×15½"

2 Straps: 4×22½"

¼ yard binding fabric:

2 Binding Strips: 2×21" from fat quarter

OR 1 Binding Strip: 2×42" from conventional quarter

½ yard ultra-firm double-sided fusible interfacing

(such as Peltex 72):

1 Bottom: 11×6"

2 Sides: 11×4¾"

2 Ends: 6×4¾"

## Tools

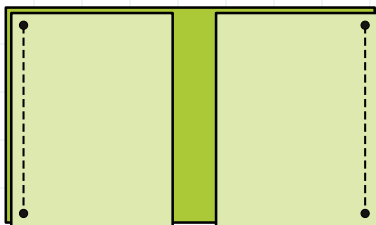
Rotary cutter, mat, and acrylic ruler

Mini iron (optional)

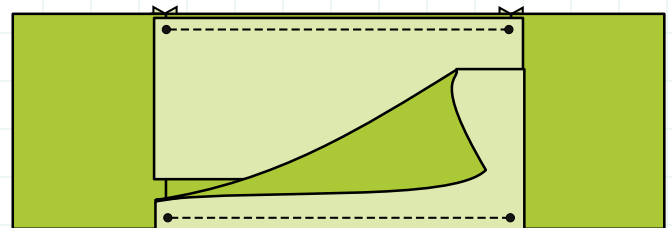
## Notes

Seam allowances are ½" unless otherwise specified.

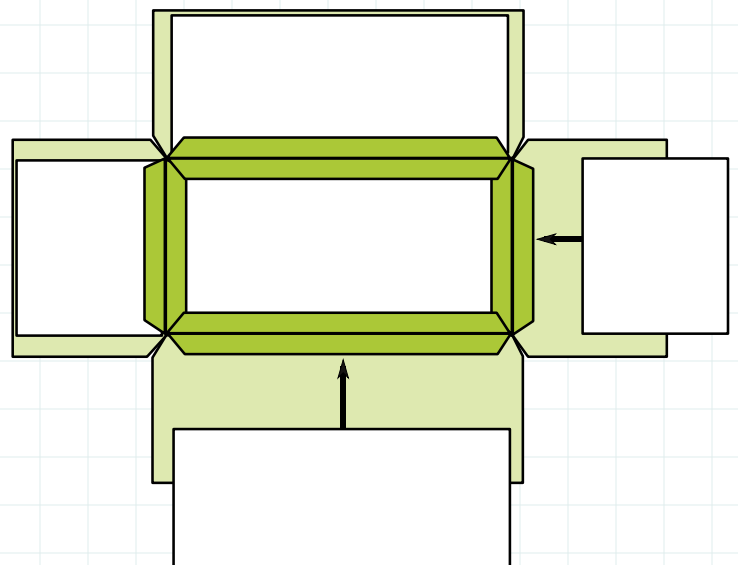
1. Sew an exterior End piece to each short end of the exterior Bottom, right sides together, stopping and starting ½" in from the edges (backstitch at both ends). Press the end panels out and the seam allowances open.



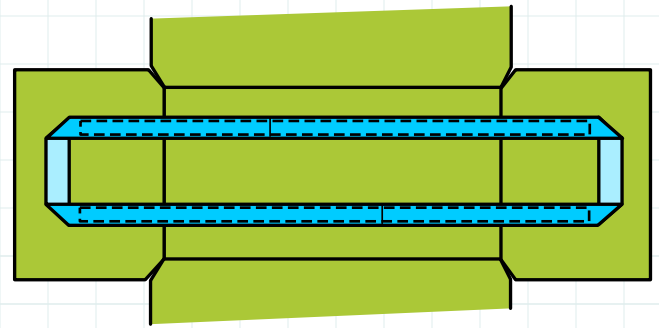
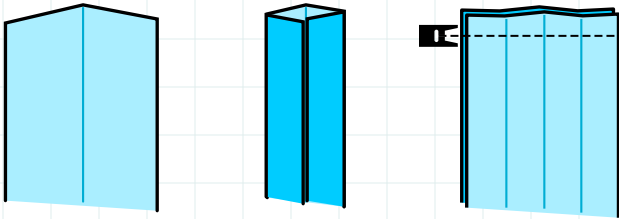
2. Sew an exterior Side piece to each long edge of the Bottom, again starting and stopping ½" from the edges. Clip the corners and press the seam allowances open.



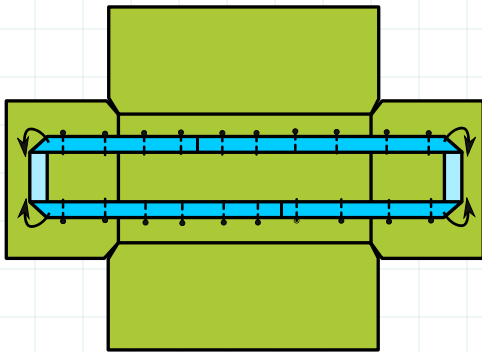
3. Slip the interfacing Bottom under the bottom seam allowances and fuse in place following the manufacturer's instructions. If necessary, trim the interfacing slightly so it fits comfortably. Fuse the corresponding interfacing pieces to the exterior ends and sides, again slipping the interfacing under the seam allowances.



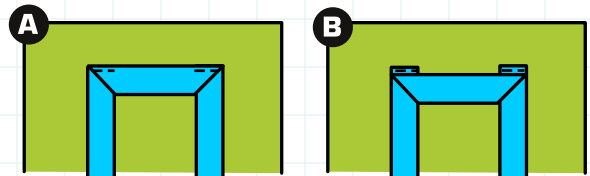
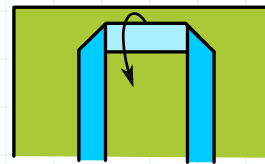
- Press each Strap strip in half lengthwise with wrong sides together. Open and press each long edge in to meet the center crease. Open the strips. Using a  $\frac{1}{4}$ " seam allowance, seam both short ends of the Strap strips together to make a loop. Finger-press the seam allowances open, refold all creases, and press; the closed width should be about  $\frac{1}{2}$ ". Pin along the open edge, then topstitch closed about  $\frac{1}{8}$ " from the edge. Also topstitch the folded edge opposite.



- Pin the strap to the assembled exterior, placing the strap 1" in from each side seam on the exterior bottom; the strap should be centered, with an equal amount extending to each end panel for handles, and the strap seams should fall on the bottom panel. Fold the strap under on the diagonal to form a handle on each end panel; finger-press the folds.



- Fold each handle down toward the bottom. For a tight, more tailored handle (A), sew over the existing topstitching where the folded-over handle overlaps with the straps (backstitch at both ends). OR For a looser handle with more finger room (B), topstitch the folds down on the strap but not through the handle itself.

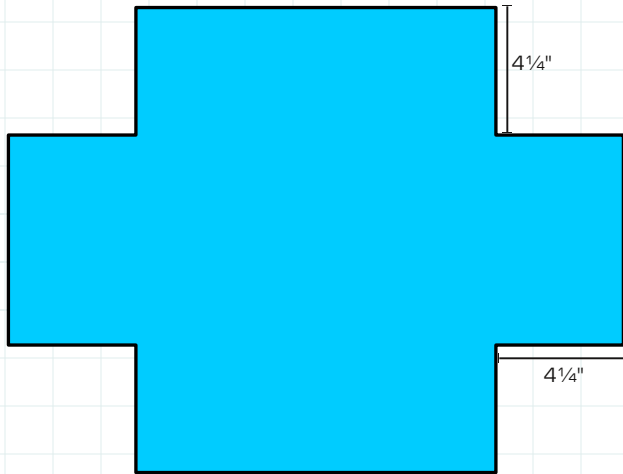


- With the interfaced side out, bring each pair of adjacent exterior edges together, pin, and sew together just to the side of the interfacing. Sew slowly so you can adjust the bulk of the bottom panel as necessary to keep it out of the way. Finger-press the seam allowances open and carefully fuse them to the interfacing. Turn the exterior right side out.

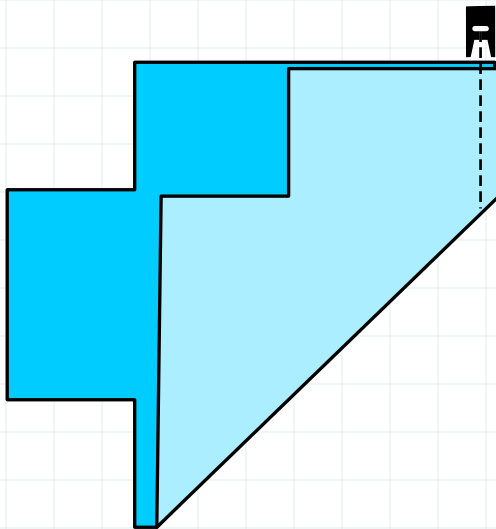
- Peel the backing off the remaining side of the interfacing in the exterior. Using the tip of your iron, carefully open the seam allowances around the bottom panel and fuse them to the interfacing (this will keep them flat while you sew the straps).
- Topstitch the straps to the bottom and end panels by sewing two rectangles as shown at the top of the next column. Follow the topstitching already on the strap and pivot to cross the strap about  $\frac{1}{4}$ " from the folded-under handle.



10. Cut a 4¼" square from each corner of the Lining piece.

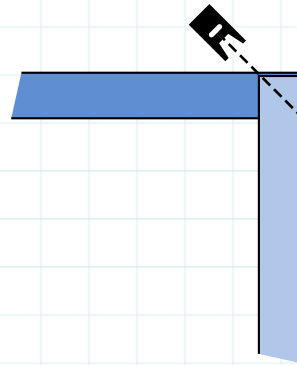


Bring each pair of adjacent cut sides right sides together and sew the corner seam. Press the seam allowances open.



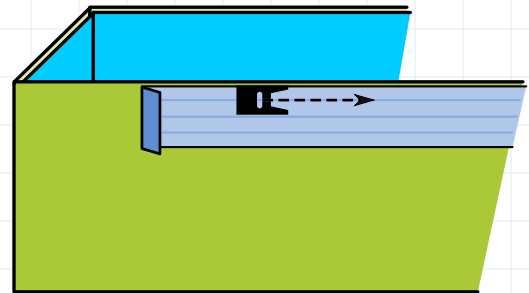
11. Insert the lining into the exterior, wrong sides together. With top edges flush and corner seams aligned, fuse the lining in place. [A mini iron is helpful to fuse the lining inside the box, but don't worry about fusing completely securely—you just need the lining to be held in place while the edges are bound. Supplement the fusing with pins if necessary.]

12. If using 2 Binding Strips, sew them together with a diagonal seam, trim the seam allowance to ¼", and press open. Press the binding strip in half lengthwise. Open and press each long edge in to meet the center crease [it helps to fold one half of the binding just short of center so it's easier to catch when sewing from the other side]. Refold the center crease and press.



Open and press each long edge in to meet the center crease [it helps to fold one half of the binding just short of center so it's easier to catch when sewing from the other side]. Refold the center crease and press.

13. Open the binding and, starting in the center of one long side, align its long raw edge right sides together with the top raw edge of the box. [If you made one half of the binding larger, align the narrower half of the binding with the box top.] Fold over ½" at this starting end. Sew along the nearest crease to the edge, though all layers, starting a few inches from the end of the strip. You may find it easier to turn the box inside out to sew the binding. When nearing the starting point, trim the loose end of the binding to overlap the starting end by at least 1", and finish sewing.



14. Refold all creases, turn the binding over the top edge of the box to enclose the raw edges, and topstitch from the exterior side to secure the binding to the lining.

FEED DOG  
DESIGNS™

modern patterns  
for creative quilters

by Kevin Kosbab

Fabric for sample project provided by Timeless Treasures